

PARSONS CREEK AGGREGATES

a sand and gravel operation

NEWSLETTER #3 | APRIL 2009

New Gravel Pit Opening

A new source of aggregate resources is opening near Fort McMurray! We are pleased to announce that Phase 1 of the Parsons Creek Aggregates sand and gravel operation has received all regulatory approvals and will begin production in 2009. Phase 1 is located on W½ 31-90-9-W4M (Section 31) 7km north of Fort McMurray on the east side of Highway 63.

Site preparation work has now begun including timber clearing and soil salvage. Construction of a new Highway 63 intersection at the north end of the site will commence in May 2009. The intersection will include new acceleration and deceleration lanes to allow for safe turning movements. Operations will occur mainly during the April to November construction season.

Thank you to our community neighbours for their input into the reclamation plans for the project. Reclamation will be ongoing and use proven sand and gravel reclamation techniques to create a new pond with replanted treed areas. Reclamation securities have been filed with Alberta Sustainable Resources Development and the Regional Municipality of Wood Buffalo.

Phase 2 Applications Filed

With Phase 1 underway, Parsons Creek Aggregates is in the process of applying for the necessary permits for Phase 2. The Project, including Phase 1 and 2, will be approximately 117 ha in size. The project is expected to last for approximately 10 years.

A Land Use Bylaw Amendment application has been submitted to the Regional Municipality to allow for sand and gravel extraction on Section 30-90-9-W4M (Section 30). A Surface Materials Lease and Conservation and Reclamation Business Plan has also been submitted to Alberta Sustainable Resources Development.

Phase 2 Open House

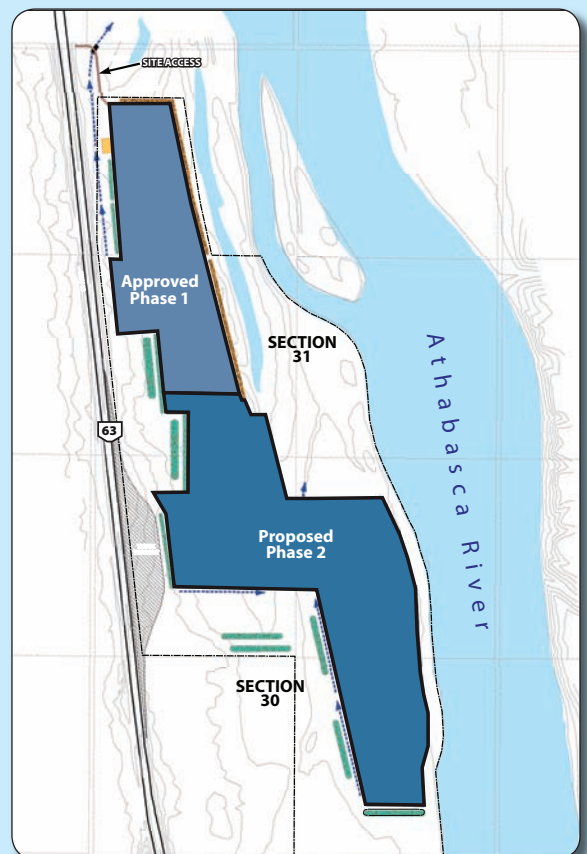
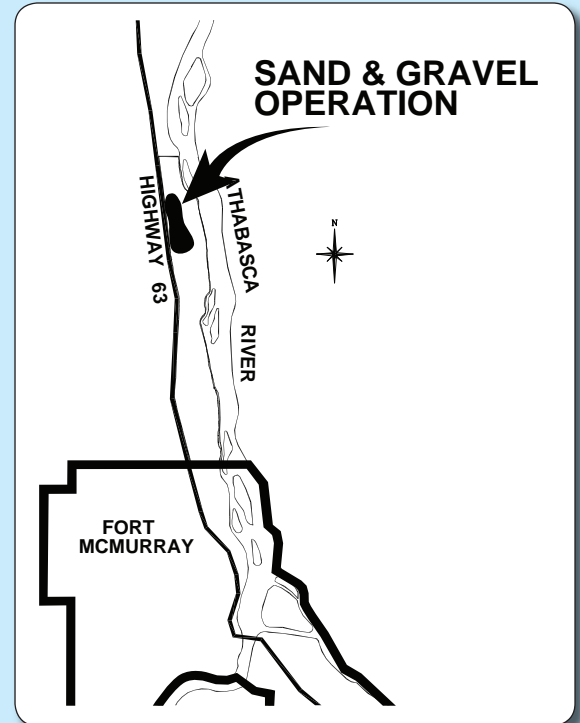
Please join us at the Sawridge Hotel to learn more on April 28, 2009 from 4:30 to 8:00 PM.

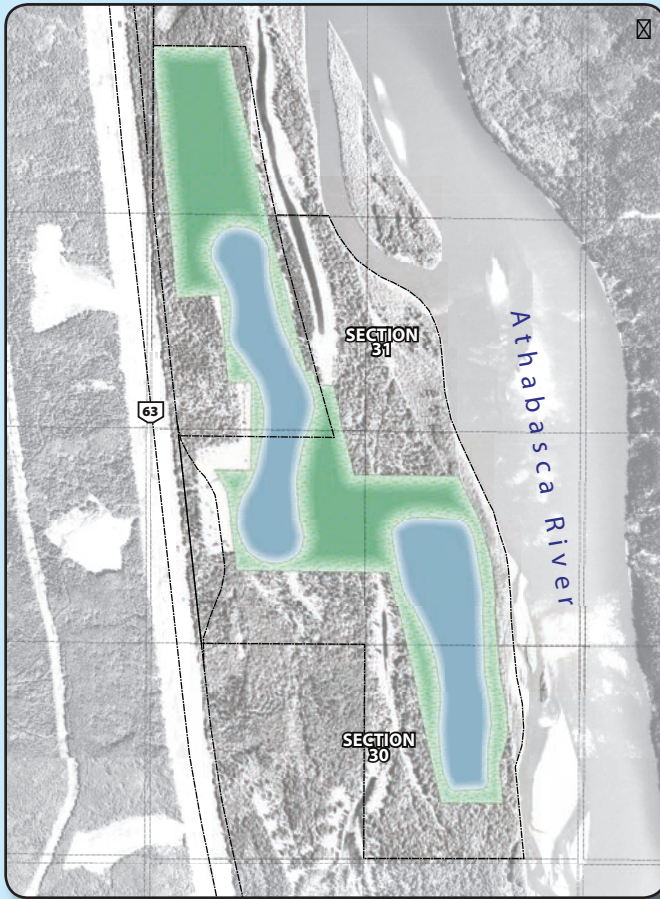
The open house will present details of the project plans for Phase 2 and the Land Use Bylaw Amendment application. It will also provide an update on Phase 1 operations.



Parsons Creek Aggregates

a joint venture of Graymont Western Canada Inc. & Inland Aggregates Limited





Environmental Commitment

A number of measures will ensure that this operation respects the natural environment.

- Surface drainage will be diverted around the operation to ensure only clean runoff enters the Athabasca River
- All onsite drainage will be retained within the operation and used in gravel washing operations.
- A buffer of at least 45 metres will be located between the operation and the Highway 63 right-of-way.
- Noise and dust control will be conducted in accordance with standard operating practices in municipalities throughout Alberta.
- There will be no emissions from onsite operations with the exception of vehicular and equipment emissions associated with extraction, crushing, washing and loading and the trucking of gravel to consumers.
- Overall, the total number of long-haul gravel trucking trips in the region will be reduced because the site is located close to Fort McMurray construction markets.

Ongoing Consultation

Inland and Graymont, the joint venture partners in Parsons Creek Aggregates, have been consulting with

regulatory agencies, Aboriginal groups, individuals, and other stakeholder groups regarding the Parsons Creek Aggregates sand and gravel operation since 2005. This consultation will be ongoing throughout the project. We will also continue to consult with stakeholders on behalf of our separate project - Parsons Creek Resources Limestone Quarry - which is currently the subject of an ongoing Environmental Impact Assessment study.

This is the third in a series of newsletters that provides information about the new North Parsons Creek sand and gravel operation. Our May 2006 newsletter contained an invitation to our public open house meeting. It also described the need for new sources of clean sand and gravel to serve construction and concrete demands in the Fort McMurray area. In January 2007 our second newsletter provided information about the provincial and municipal approval process for sand and gravel operations. A future newsletter and on-site open house will be scheduled once operations are underway.

For Further Information

We welcome your inquiries. If you would like further information please call our toll-free phone line at 1-866-404-4763 and ask to speak to Ron Wrigley or Liisa Tipman of Brown & Associates Planning Group. We can provide additional information or put you in touch with appropriate people from the project team. You can also find contact information and project information on website at www.parsonscreekresources.com.



Parsons Creek Aggregates

a joint venture of Graymont Western Canada Inc. & Inland Aggregates Limited